

CONDENSER TUBE FAILURE can occur for a number of reasons. However, we have been seeing an alarming number of new tubes coming in with manufacturing defects. Since the first two years of operation are critical, this is making an already difficult situation that much worse. Most owners are not aware of the problem until a failure occurs, and at that point, fingers are normally pointed at the water treatment company or the way the equipment was maintained. *The question becomes how many failures are due to tube defects?*

It is our recommendation that when a chiller is re-tubed or a new machine is installed that the tubes are cleaned, passivated, and visually borescoped to establish a baseline condition of the tube surfaces. The borescope should have the capabilities to take pictures at a 90 degree angle to detect defects or corrosion on the tube surfaces prior to putting the machine in service.

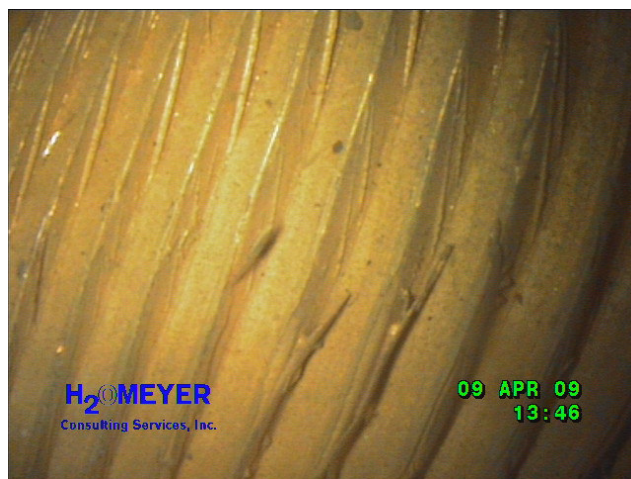
Borescoping is different than an Eddy Current study. An Eddy Current study identifies metal thickness and therefore metal loss. While we would recommend a baseline Eddy Current study be done, the borescope study is strictly visual and very important.

Attached to the right are pictures of a new machine recently installed at a customer site. Please note the defects in the tube enhancements and the tube corrosion at the bottom. These tubes have been pre-cleaned and the machine has not yet been placed in service. By identifying the tube defects early the client may address any warranty issues and adjust the treatment regime accordingly. The defects will create low flow areas making proper treatment extremely difficult and making early failures a strong possibility.

Homeyer Consulting Services, Inc. is the nation's largest Industrial Water Consulting Firm consulting to over 3,500 sites in 10 countries. Our current account base represents over 1.2 billion square feet of building space. We consult to major Property Management Firms, Data Centers, Universities, Pharmaceutical Firms, Hospitals, and Industrial Plants. We specialize in HVAC and Process Related Waters used for heat exchange.



Row 30, Tube 41 – Manufacture defects of tube enhancements.



Row 15, Tube 24 – Manufacture defects of tube enhancements.



Row 30, Tube 41 – Some visible corrosion.